

# TRANS-ALASKA PIPELINE SPILL SCENARIO - MID AUGUST


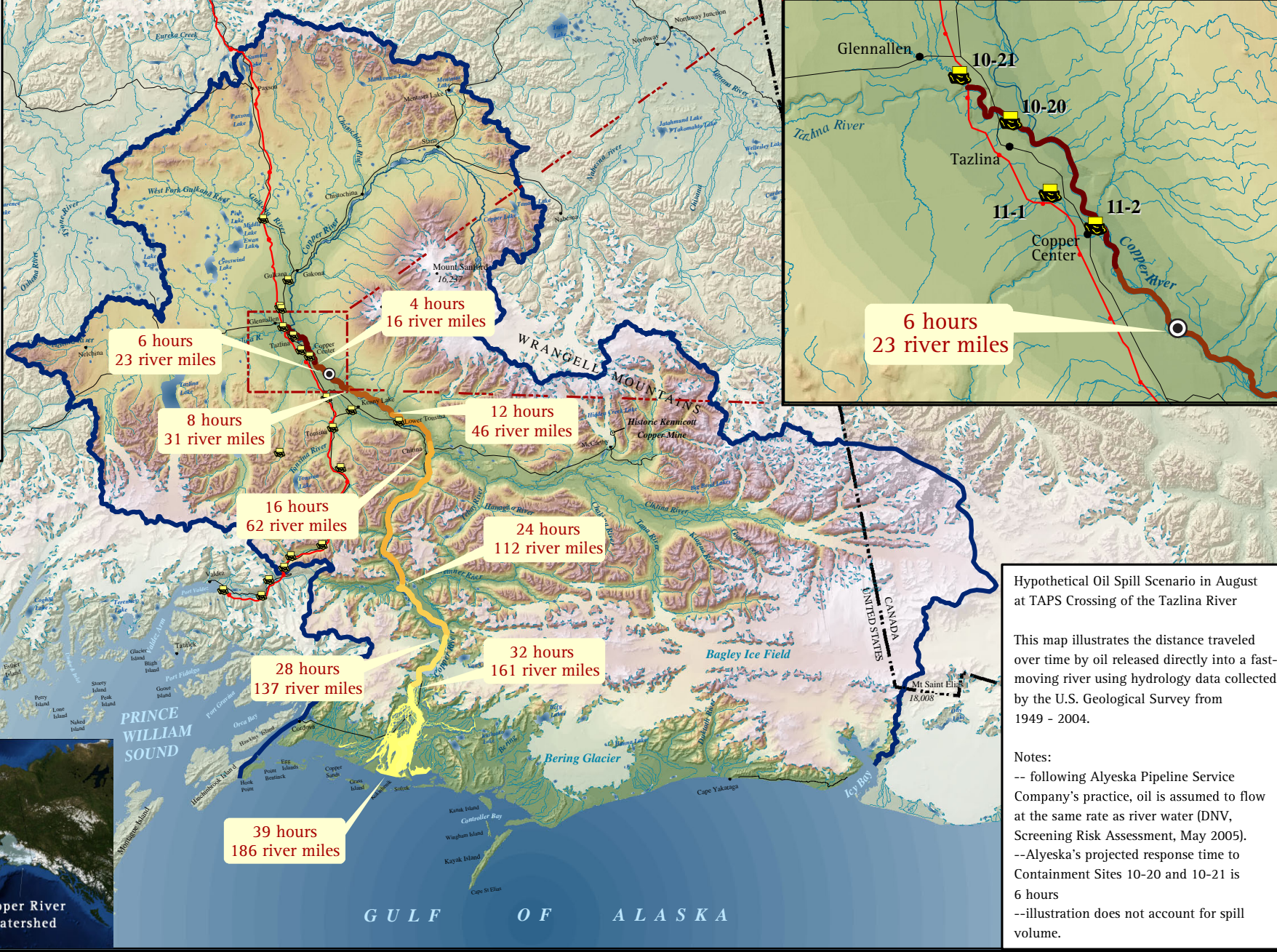
**Legend**

- Trans-Alaska Pipeline
- Containment Site
- Towns
- Roads
- Copper River Watershed

**Distance Traveled**

- 4 hours
- 8 hours
- 12 hours
- 16 hours
- 24 hours
- 28 hours
- 32 hours
- 39 hours

The creation of this map was made possible through the joint efforts of:

Hypothetical Oil Spill Scenario in August at TAPS Crossing of the Tazlina River

This map illustrates the distance traveled over time by oil released directly into a fast-moving river using hydrology data collected by the U.S. Geological Survey from 1949 - 2004.

Notes:

- following Alyeska Pipeline Service Company's practice, oil is assumed to flow at the same rate as river water (DNV, Screening Risk Assessment, May 2005).
- Alyeska's projected response time to Containment Sites 10-20 and 10-21 is 6 hours
- illustration does not account for spill volume.



GULF OF ALASKA